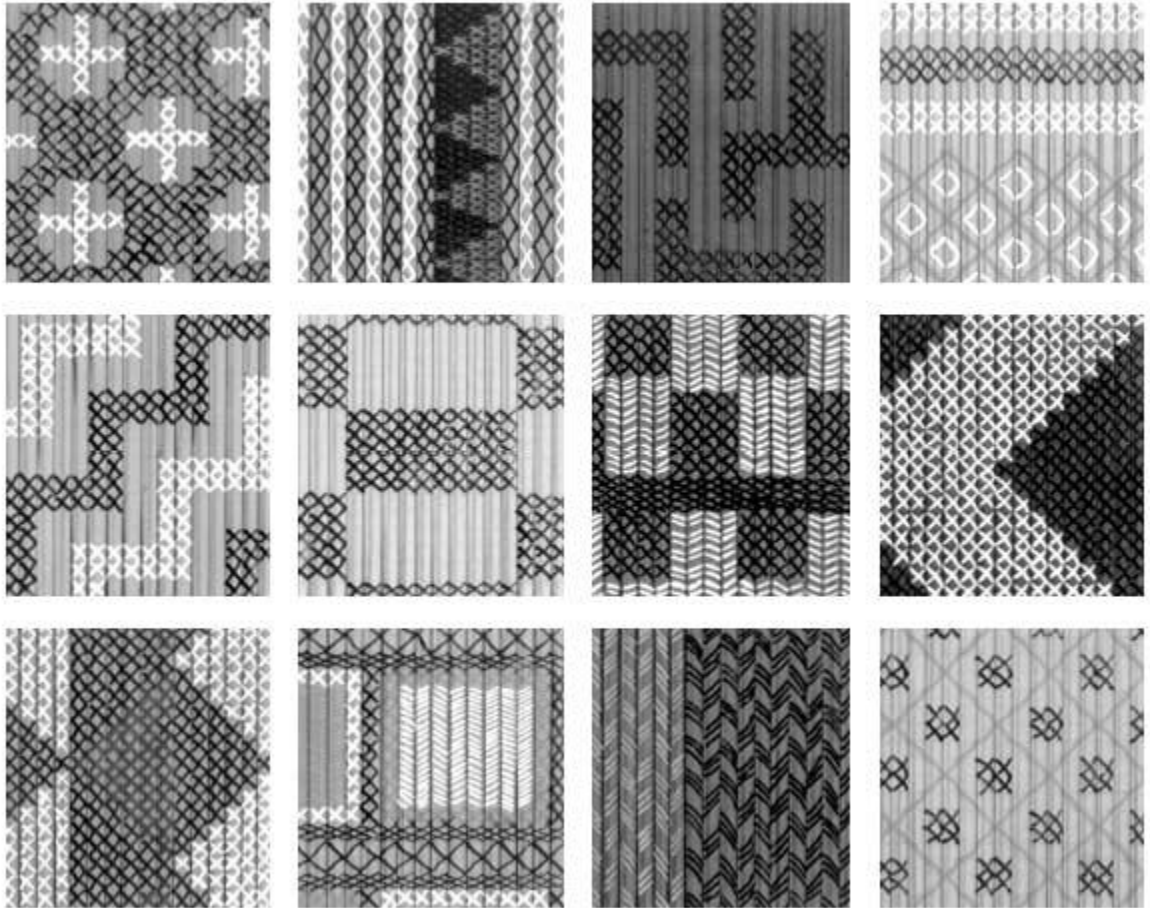


# Tukutuku Tuturu Maori

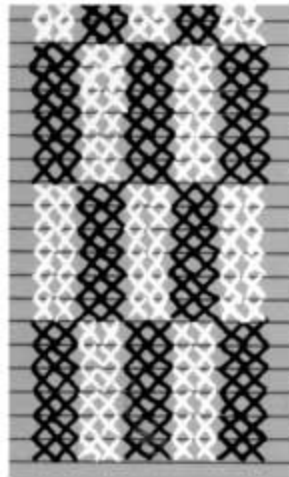


Tukutuku panels are synonymous with carvings and kowhaiwhai patterns when we think of Whare Whakairo-Wharenui. In most Meeting Houses one can look forward to admiring the tukutuku panels in between the poupou. There, the interpretation of each Tukutuku design will complement and reinforce the stories told in the carvings and kowhaiwhai patterns. Not only are tukutuku patterns an integral part of the storytelling of each Whare, they add aesthetic

beauty to the interior of the House. In contrast to the spirals, swirls and curved lines of the carvings and kowhaiwhai paint-work, the straight lines that form the basis of all tukutuku design provide a distinctive component in the overall art form of each House.

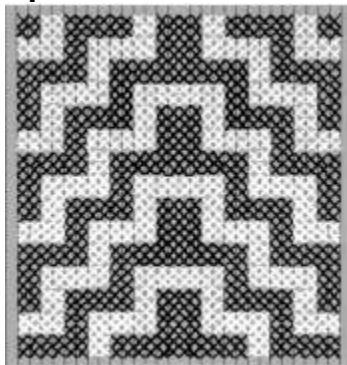
### **Modern Innovations in the Making**

Substitutes for traditional materials have become widely accepted, as they are readily available all year round and are more versatile. An excellent replacement for the lattice-like frame structure is peg-board, which can be purchased in a range of sizes and then cut into different shapes. Dyed raffia and fibre plastic strips are often used instead of kiekie and pingao. These materials are available in vibrant colours, some fluorescent and when used, will produce an exciting effect. These materials are also preferred as they have a longer life than traditional materials and do not require regular maintenance.



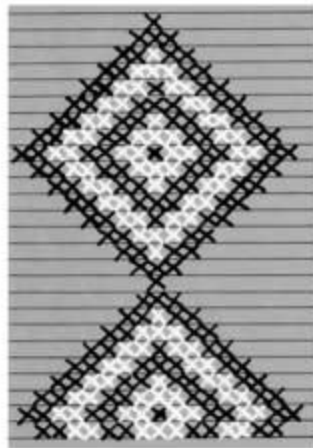
**Roimata Toroa or Roimata Turuturu:**

***Albatross Tears*** The albatross is a rare and wonderful visitor to the northern parts of New Zealand and was revered by the pre-European Maori. The tears of the albatross signified something that was both rare and beautiful and as such was incorporated into tukutuku work.\*

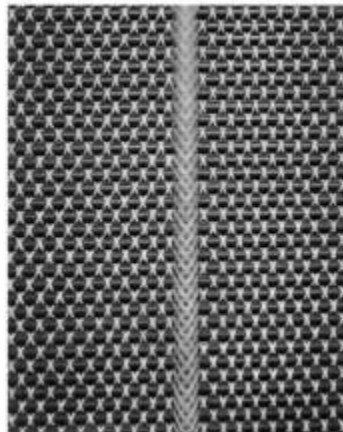


**Poutama: *The Stairway To Heaven***

The Poutama design in ancient lore symbolised a climb made by a folk hero Tawhaki to receive the three baskets of knowledge from the gods.\*

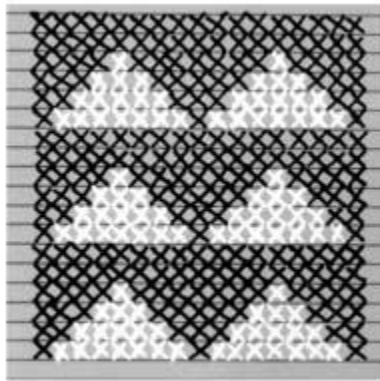


**Pat ikitiki: *Flounder. Also the Maori name for group of stars near the Milky way- the "Coal-Sack"*** The flounder is a fairly common flat fish found near the beaches and estuaries on the New Zealand coast. Of distinctive diamond shape and delicious flavour, this fish is a favourite food of New Zealanders 'in the know'.\*

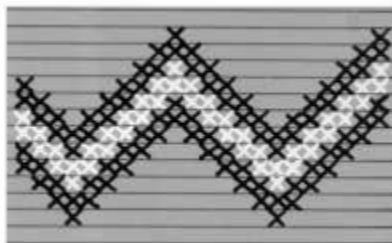


**Purapura Whetu: *Purapuramyriads;whetu-stars*** A poetic expression for the multitude of stars seen in the heavens at night.... the Maori

desire for a large family is a trait handed down from our ancestors.



**Nihotaniwha: *The Teeth of the Dragon***  
Taniwha are mythical monsters usually associated with the ocean, lakes and rivers of New Zealand. Feared for the destruction they wrought, their sharp diamond pointed teeth are symbolised by this design.\*



**Kaokao: *Human Ribs-Armpits*** Abstraction and symbolism, to the point where the human element is difficult to recognise, represents the interfusion of the spiritual and temporal life of the Maori.\* This pattern was dedicated to the war-god, Tumatauenga.